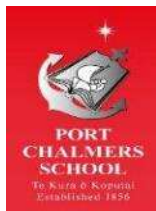
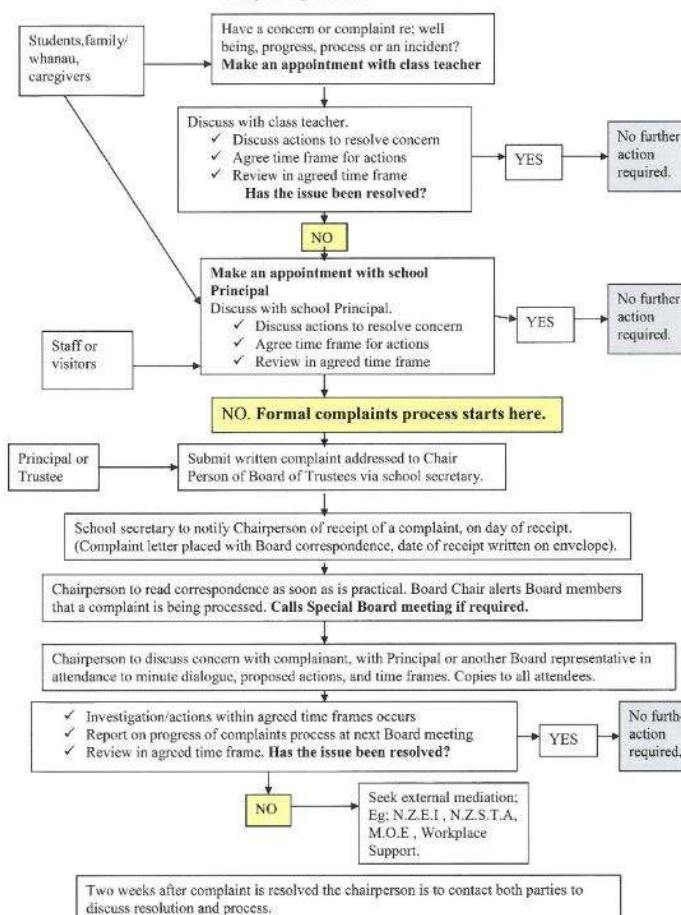


Tena koutou katoa nga mihi ki te whanau o te Kura o Koputai – greetings to all families of Koputai (Port Chalmers) School.



TUMUAKI NEWS

Complaints procedure



Parent Conferences

Thank you to everyone who came to the goal setting conferences this week. It is always great to work together to set both learning and social goals. We appreciate your time and know that your children really value that we work together.

Teacher Only Day

Please remember that next Friday the 6th of March school will be closed so that the teaching team can spend a night and day at Otakou Marae. We are really looking forward to the learning and networking that will happen on this day.

News from the Board of Trustees

The Board of Trustees met for the first time this year on Monday night. Anna Hudson was re-elected as the Chair.

Ka kite ano

School Working Bee and Tidy Up



We are going to have a school working bee on Saturday 28th of March from 9:30 am. Please consider coming to help us get the gardens in order and woodchips spread in the playground.

Breakfast Club

Thank you to the parents who have volunteered for Breakfast Club. We are almost fully covered; however, we are looking for one volunteer to help with Breakfast Club on a **Thursday** morning. Please let the office know if you can help.



An exciting 33-33 draw with Opoho on another sunny day. Great batting and fielding by Willow. Bella bowled a great over.

Train & Track Safety



Tracks are for trains only it is dangerous and against the law to walk on railway tracks or to walk through the train tunnels. Keep yourself safe by staying away from railway tunnels and stay off railway bridges.

The local railway line is - super-busy, trains are fast and heavy – and KiwiRail's train drivers can't stop quickly (check out the video below). Keep yourself safe by staying away from train tunnels and rail bridges and only cross train tracks at a proper rail crossing
Ka puta ngā tereina ahakoa te wā, mai I ngā ahunga e rua. Expect trains at any time from either direction.
Please keep safe and remember: tracks are for trains!

The link to a video where KiwiRail drivers talk about why it is so important to keep off the tracks

<https://www.facebook.com/KiwiRailNewZealand/videos/470839839945311>

Communication

Our newsletter each week is our main source of communication with our learning community. It is distributed to the youngest child in each family on a Thursday. It is a little concerning when we notice that the newsletter is still at the bottom of school bags well into the next week. We rely on the fact that this very important news sheet gets to each family on a Thursday. Please look for it in backpacks. We can also email a copy to families if you would prefer us to do this. If you have any feedback on the newsletter and the way we communicate with you as families we are always prepared to listen. We do share some things on our school Face Book page, Skool Loop and our Website.
www.portchalmers.school.nz

Feb/March issue of Tots to Teens.

<http://issue2002s.totstoteens.co.nz/>

Project Kowhai

Emerson from Room 7 very kindly donated Kowhai Seedlings to the Junior School pupils. He said, "People are cutting down millions of trees. That is why I have grown these seedlings for you to plant. Find a special place where the Kowhai can grow big and strong".

Thank you, Emerson.



Portraits from Room 4



Te Reo

Ko te piko o te mahuri tera te tupu o te rakau.
The way the sapling is shaped determines how the tree will grow.

Room 7 Practicing their Portrait Drawing 1st Draft



BOATING

Tues 3 rd March	12-2.45pm
Tues 17 th March	12-2.45pm
Tues 31 st March	12-2.45pm

ASSEMBLY TIMETABLE

Room 8	13 th March
Rooms 5 & 7	20 th March
Room 2	27 th March
Room 4	3 rd April

CALENDAR OF EVENTS

28th February	Swimming for whole school
2nd March	Swimming for whole school
5th March	Swimming for whole school
6th March	Teacher Only Day (School closed)
9th -13th March	Yr 7 & 8 Camp Yr 1 – 6 Outdoor Education Week
19th March & 26 March	Room 4 & 2 swimming
23rd March	Otago Anniversary Day (School closed)
28th March	Working Bee
9th April	Last day of term
28th April (Tuesday)	Term 2 Begins

Vicki Nicolson Principal
www.portchalmers.school.nz