

Tena koutou katoa nga mihi ki te whānau o te Kura o Koputai – greetings to all families of Koputai (Port Chalmers) School.

We have had a fabulous start back at school. It has been really pleasing to see students settling into their classes and back into learning again this year. There are so many exciting and rich learning opportunities planned and already underway across the school. I have included a photo from each room in the newsletter today.

With the return to school some questions you may like to ask your child to get a sense of their day that may elicit more than the standard one-word response of “nothing” or “fine” is to try...

Tell me the best part of your day? What was the hardest thing you had to do today? Who helped you today? What was the funniest thing that happened today? What is the biggest difference between this year and last year? Who did you sit with at lunch? Can you show me something you did (or learnt) today?

Family picnic – Monday 13th February

We would like to invite families to join us next Monday from 5pm at school for dinner and a chance to catch up with the teachers and chat with other families. It will be nice to see you and your whanau. Bring along your dinner. We will have the school BBQ available if you want to cook something too. If it is wet however, there will be no postponement date.

Paid Union Meeting (advance notice)

NZEI Te Riu Roa members at our school have been invited to attend a paid union meeting on 1st March at 1:30pm, so they can discuss the offer made by the Ministry of Education for their collective agreement. Our teachers will attend this meeting. Accordingly, the majority of the school's teaching staff will be unavailable after 12:30pm on that date.

We encourage you to either pick your child up from school by 12:30pm or make some other arrangements for the duration of the meeting. However, if you are keeping your child at school during this time an alternative programme will be provided for them for the duration of the meeting. We apologise for any potential disruption to you and your child's routine on the day of the meeting. We will be asking for your intentions for your child through Skool Loop closer to the time.

Pepeha

A Pepeha is a way of introducing ourselves. It identifies who we are, where we are from and where we belong. Our Pepeha connects us to each other and our whakapapa.

Teachers and students are starting the year compiling their Pepeha to learn and practice by sharing with others.

Te Reo Māori

whakapapa(genealogy)

maunga (mountain)

awa (river)

matua (father)

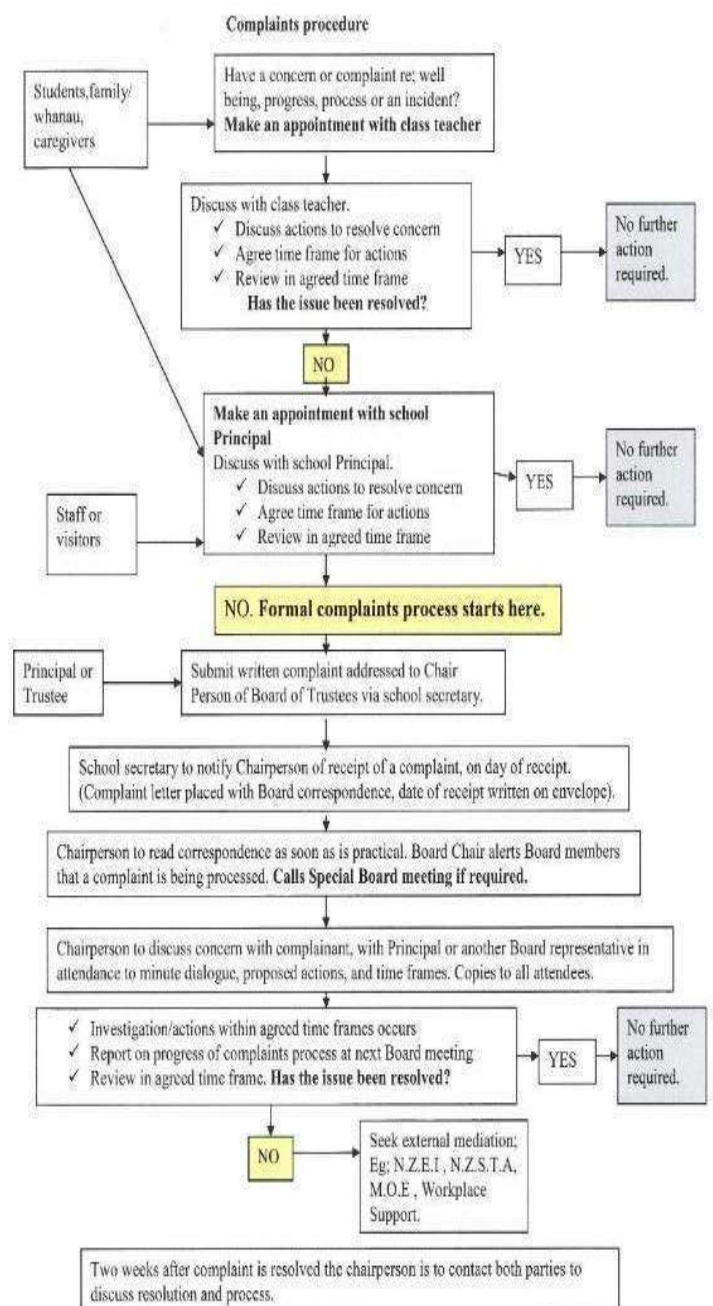
whaea (mother)

ingoa (name)

<https://nzhistory.govt.nz/culture/maori-language-week/365-maori-words>

Make up

We do not encourage children to wear make up to school. Any pupil wearing it, will be asked to remove it. We have wet wipes for this purpose. Thank you.



Our Classes in Action in Week 1



Welcome to Kiylah in Rūma Mangō and her whānau. We are sure you will enjoy your time here as part of our learning community.

Swimming

Swimming starts for all classes on Monday 13 February. We will swim Monday, Tuesday, Thursday and Friday for two weeks. Please be prepared.

The first Port Chalmers Library book club for 2023 will be held on Monday the 13th of February from 3.15pm. As usual, we'll be starting off with some nibbles and drink before launching into some fun and games. This month we will be cooking pikelets and making kaleidoscopes. Join us on the 13th and then the first Monday of the month thereafter for some fun and books!

Kelly Sports After School Programme

Kelly Sports is running an after-school programme again at Port Chalmers School. This will be on a Wednesday, starting on the 15th of February. The focus this term will be on Cricket, Golf and Athletics. The price is \$60 for 6 weeks. This will be on a Wednesday 3.10 pm to 4.10pm. For more information please contact Sarah Taylor 027 695 8004 or email dunedin@kellysports.co.nz. Kellysports.co.nz/Dunedin

Saturday Music Classes

Enrolling for 2023 Classes February 11 for Primary School Children - A wide variety of instruments to choose from – Instruments can be hired and a reasonable price. Enrolment details for 2023 Saturday 11 February at George Street Normal School main block, 9:30-11:00 or Bathgate Park School Foyer, 9:30-10:30 or Elmgrove School, Mosgiel, enrolling on Wednesday 16th Feb, 3:30-4:30pm). Enrolment enquiries: email stephanie@smmcotago.nz (phone 03 4772296) or see website: www.smmcotago.nz for contact details

Calendar of Events

13th February	Swimming starts (for two weeks)
13th February 5:00pm–6:30pm	Family Picnic at school (weather dependent)
24th February 1:30 pm	Elgregoe Show
6th & 7th March	Goal Setting Conferences
20th March	Otago Anniversary Day (school closed)
21st March	Rūma Pāua Bike Skills course
6th April	Last day of Term
26th April	Term 2 Begins

Assembly Timetable

March 3 rd	Rūma Pipi & Rūma Tepetepe
March 10 th	Rūma Wheke
March 17 th	Rūma Pāua
March 24 th	Rūma Mangō

Swimming Timetable

Rūma Pipi	In the water 9.30am
Rūma Tepetepe	In the water 10.00am
Rūma Wheke	In the water 10.30am
Rūma Pāua	In the water 11.00am
Rūma Mangō	In the water 11.30am

